


FREE
PATTERN

JURASSIC JOURNEY

BY QT FABRICS



Laser Cut
QUILTS
EST. 2016



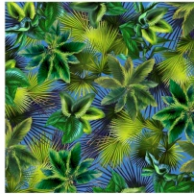


29767 X

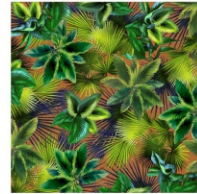


29768 X

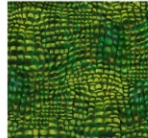
29769 B



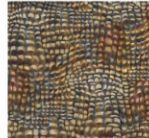
29769 A



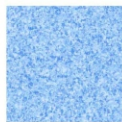
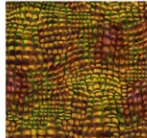
29770 G



29770 K



29770 A



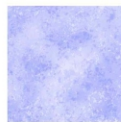
Color Blends WX



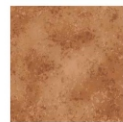
G



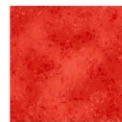
Rapture H



WZ



AC



RC

Black Illusions

TEMPLATES PAGE 1A OF 6-
REVERSED FOR APPLIQUE



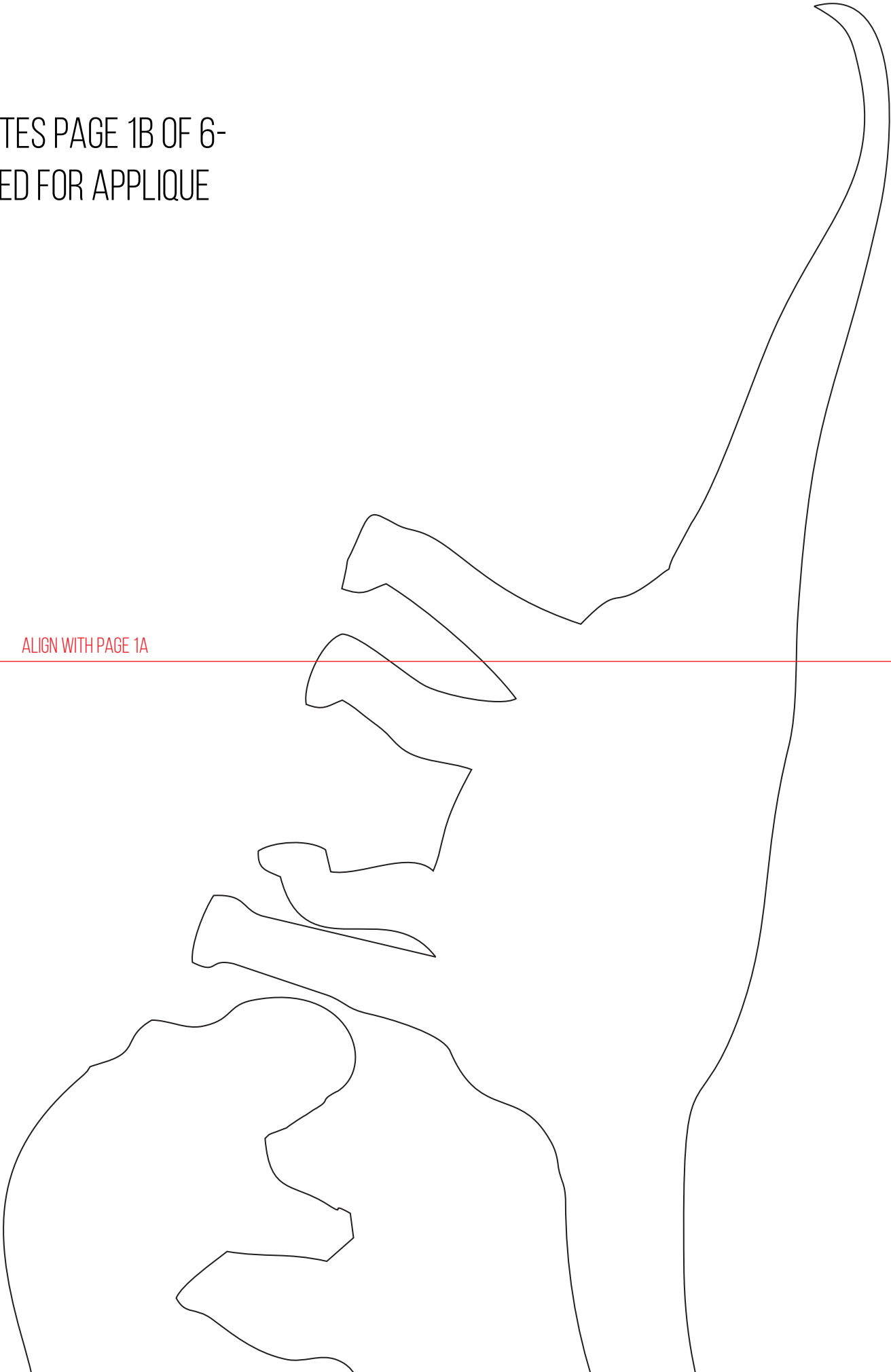
BRONTOSAURUS
CUT 2
FROM FABRIC 29770-K



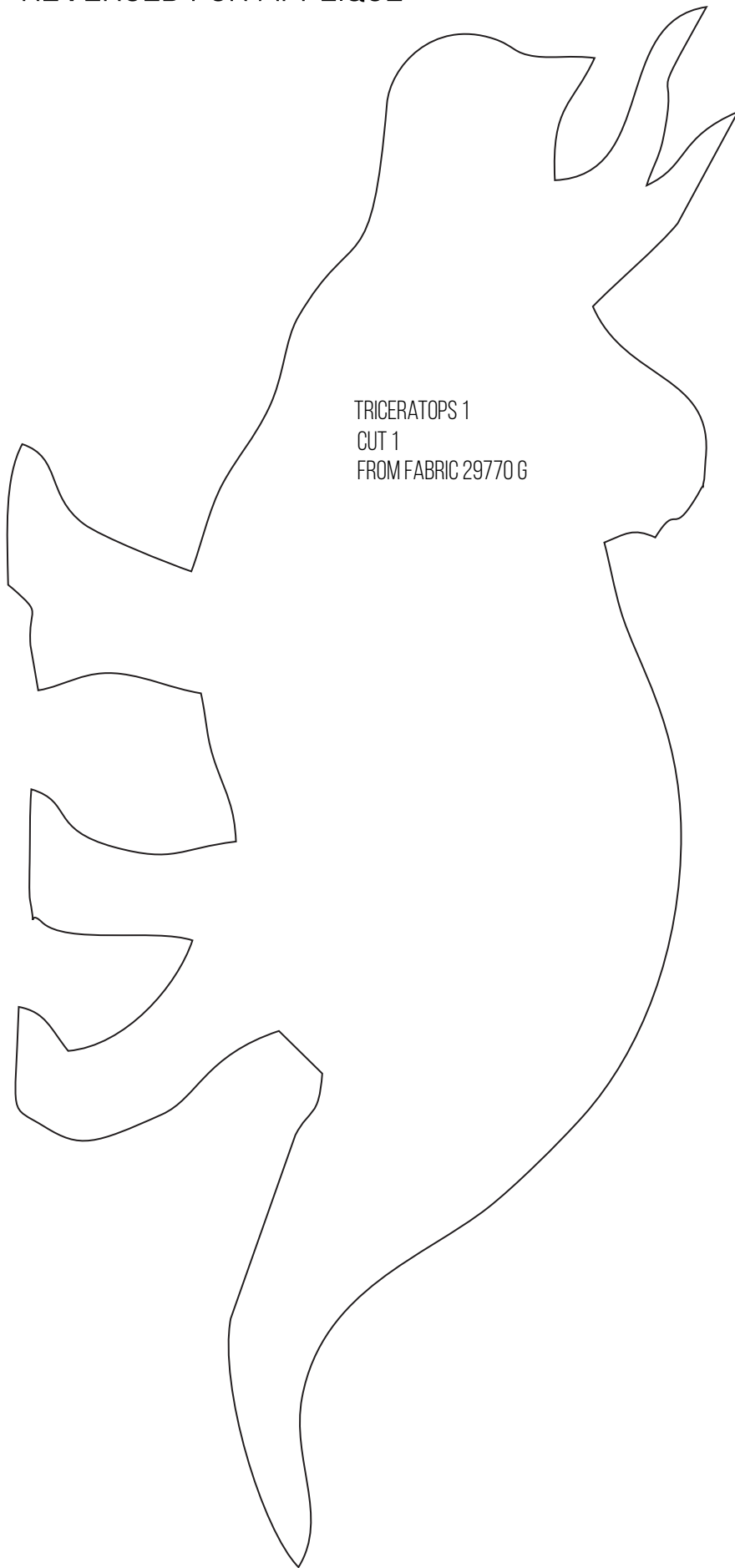
T-REX 1
CUT 1
FROM FABRIC 29770-K

TEMPLATES PAGE 1B OF 6-
REVERSED FOR APPLIQUE

ALIGN WITH PAGE 1A



TEMPLATES PAGE 2 OF 6-
REVERSED FOR APPLIQUE



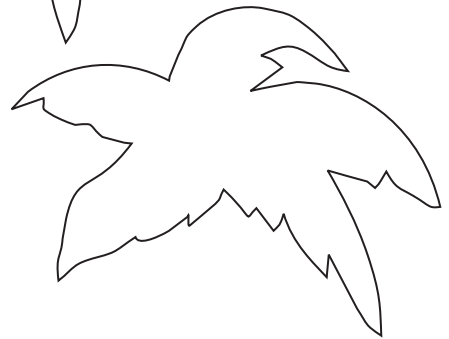
TRICERATOPS 1
CUT 1
FROM FABRIC 29770 G



PALM TRUNKS
CUT 4 OF EACH
FROM FABRIC 27935-ACORN



PALM FRONDS
CUT 4 OF EACH
FROM FABRIC 27935-H LIME



TEMPLATES PAGE 3 OF 6-
REVERSED FOR APPLIQUE



TRICERATOPS 2
CUT 1
FROM FABRIC 29770 G

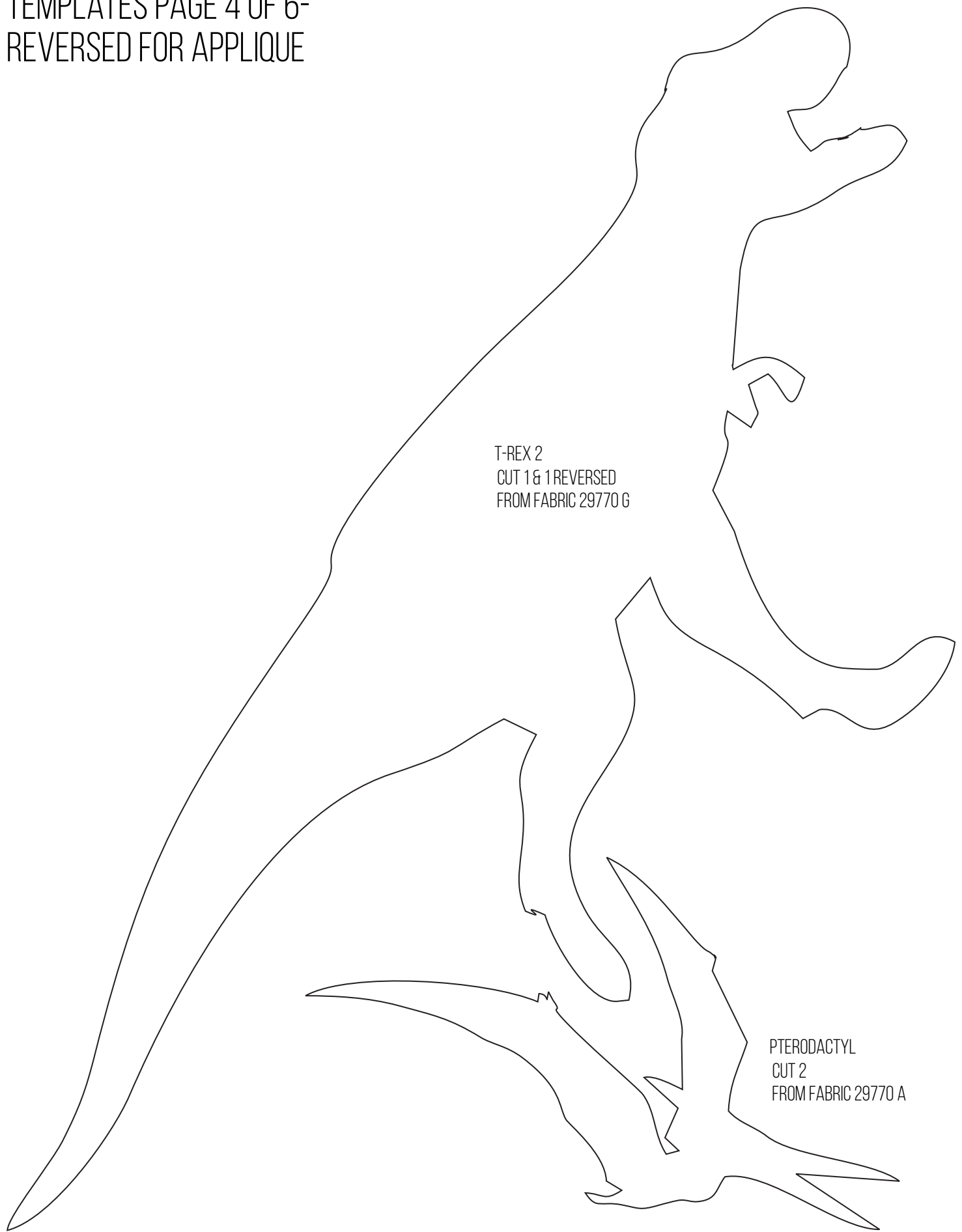
A large, simple line-art silhouette of a triceratops, shown in profile facing right. It features a large, fringed crest on its head and three prominent horns. The body is rounded, and the legs are thick and sturdy.



STEGOSAURUS
CUT 1
FROM FABRIC 29770 G

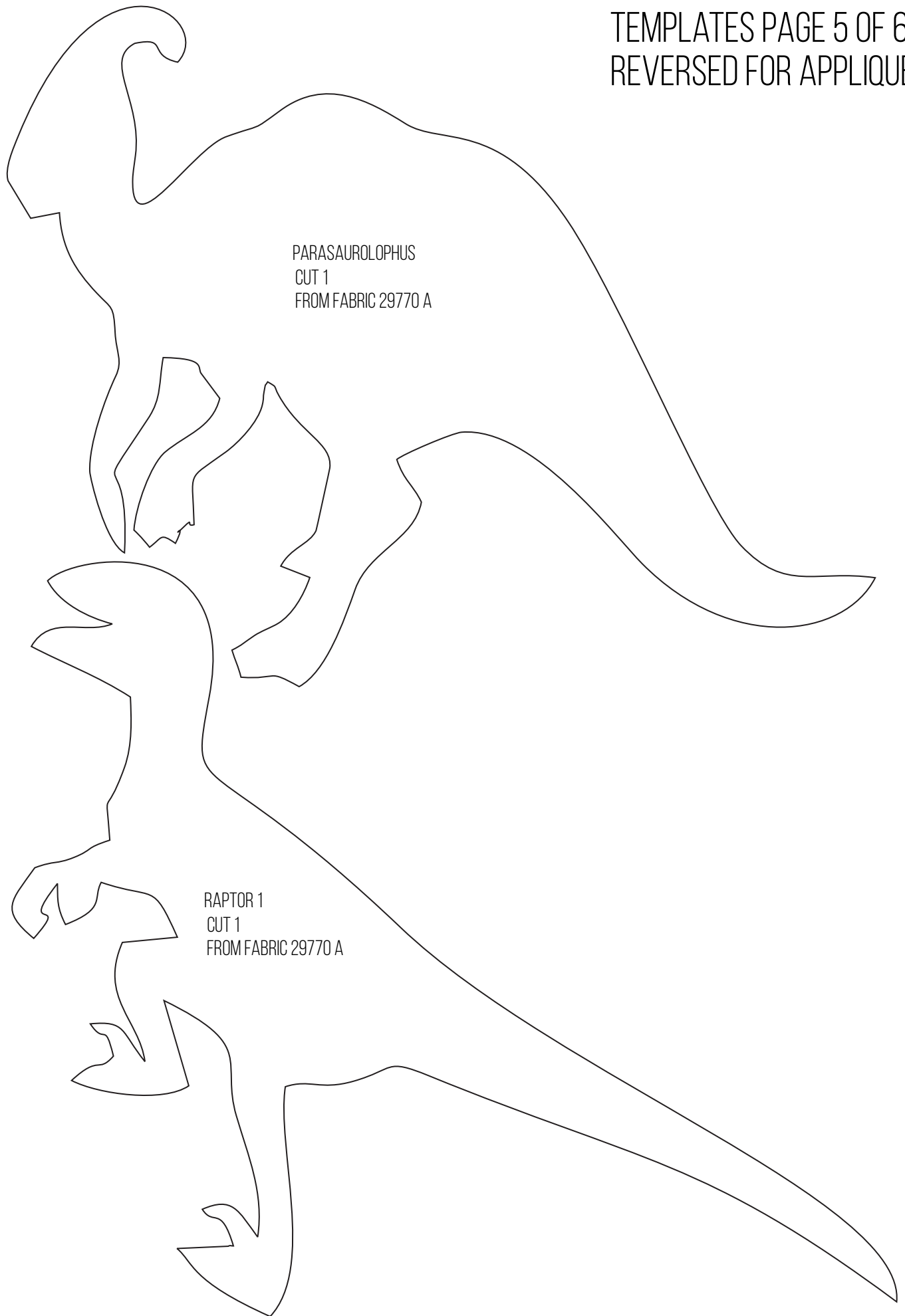
A large, simple line-art silhouette of a stegosaurus, shown in profile facing left. It has a long, low body with a series of rectangular plates along its back. The tail is long and tapers to a point. The legs are thick and sturdy.

TEMPLATES PAGE 4 OF 6-
REVERSED FOR APPLIQUE



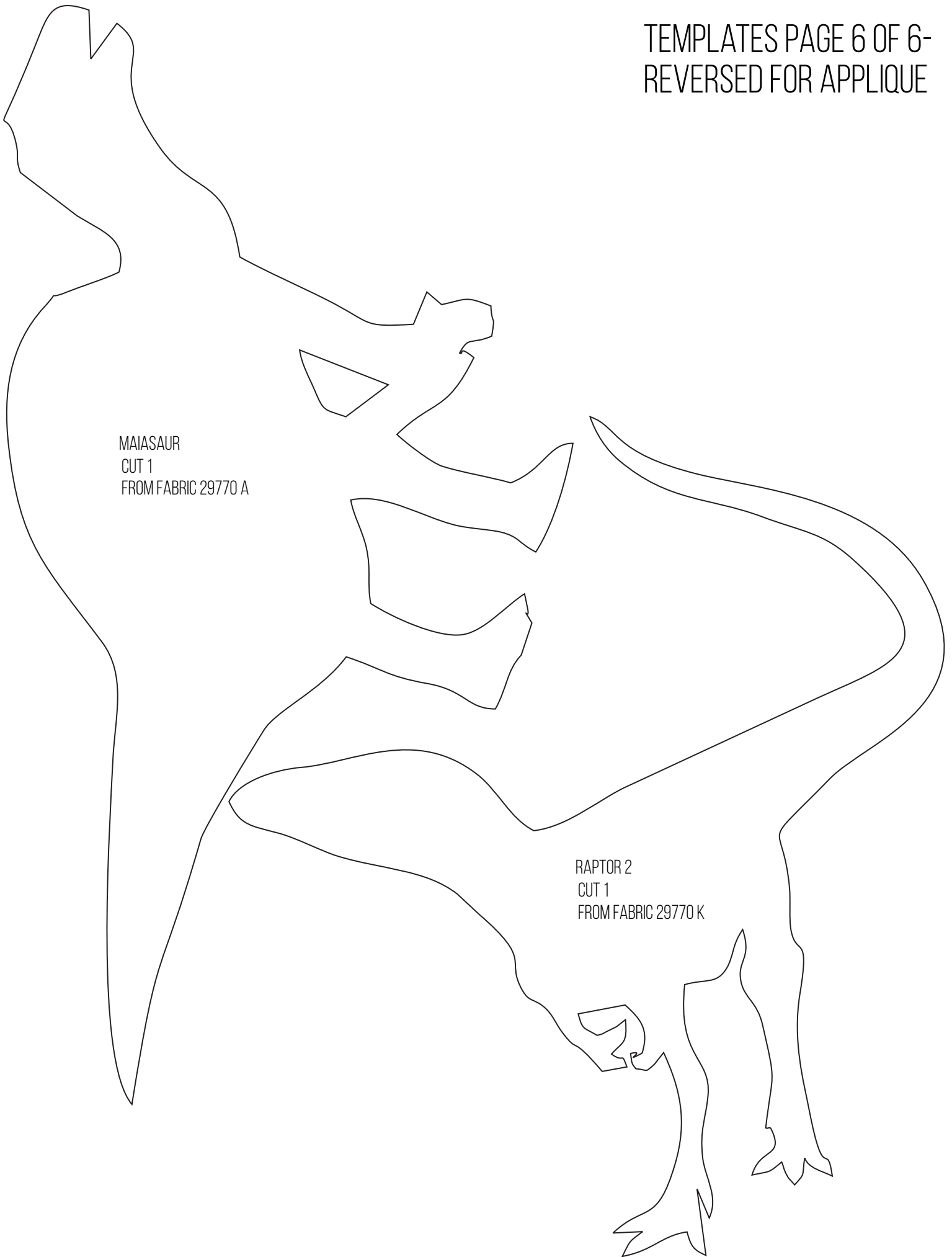
T-REX 2
CUT 1 & 1 REVERSED
FROM FABRIC 29770 G

PTERODACTYL
CUT 2
FROM FABRIC 29770 A



PARASAUROLOPHUS
CUT 1
FROM FABRIC 29770 A

RAPTOR 1
CUT 1
FROM FABRIC 29770 A



MAIASAUR
CUT 1
FROM FABRIC 29770 A

RAPTOR 2
CUT 1
FROM FABRIC 29770 K

Main Panel Instructions

Seam allowance should be 1/4" for all blocks.
Cut panel to 40 1/2" x 33 1/2," ensuring the panel is centered and square.

Flying Geese Instructions



1. You'll be making (12) flying geese units in total.
2. Cut (12) 3" x 5 1/2" rectangles from fabric **27935-H Lime**.
3. Cut (24) 3" squares from fabric **23528-WX**.
4. Use the stitch and flip flying geese method: Align one of your squares with one side of your rectangles, fabrics right sides together. Draw a diagonal line across your square and stitch in place. Press and trim seam to 1/4." Repeat on the opposite side of your rectangle with another square, ensuring the diagonal seams meet at a point in the center of your rectangle.
5. Sew your flying geese together in flocks of three, all facing the same direction.
6. You'll have (4) units each with a flock of 3 geese that measure 8" x 5 1/2."

Block Star Instructions



1. You'll be making (4) block star units in total.
2. From fabric **23528-G**, cut:
(4) 6" squares
(16) 3" squares
(16) 3" x 5 1/2" rectangles
3. From fabric **27935-AC Acorn**, cut:
(32) 3" squares.
4. Follow basic applique instructions (page) to apply the palm trees to each of your (4) 6" squares of 23528-G before proceeding.
5. Trim finished applique blocks down to 5 1/2," ensuring applique is centered and straight.
6. Make (16) flying geese units (use above instructions), using your (32) 3" squares of 27935-AC Acorn and (16) 3" x 5 1/2" rectangles of 23528- G.
7. Attach (2) finished flying geese units to the side of each of your 6" squares,

ensuring the green "arrows" point toward each other.



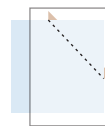
8. Attach (1) 3" square of fabric 23528-G to each side of the remaining (8) flying geese blocks (see image below for reference). You'll have (8) total of these units.
9. Attach one of these units to the top and bottom of your center block units. Each of your (4) block stars should measure 10 1/2" square.



Large Square-in-a-Square Instructions



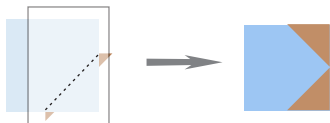
1. We prefer paper-pieced square-in-a-square blocks. If you'd like to deviate from this, follow your favorite method. Refer to the following pages for paper piecing templates for perfect square-in-a-square 10" and 5" finished blocks.
2. From fabric **23528-WX**, cut:
(4) 11" squares
3. From fabric **27935-AC Acorn**, cut:
(8) 6 1/2" squares. Cut each of these on the diagonal into half-square triangles.
4. Tape the Large Square-in-a-Square templates together.
5. Lay out (1) of your 11" squares, fabric side down. Place your Large Square-in-a-Square template on top, aligning the fabric square to the center of the printed square. Pin in place (not on stitch lines).
6. Place 6 1/2" half-square triangle piece, fabric side up under both the fabric square and template. You should have a "sandwich" with fabric that looks similar to the image on the bottom left with the fabrics right sides together and the template on top.



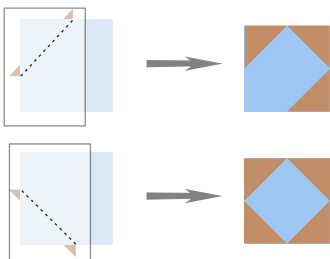
7. Align the triangle so there will be at least 1/4" seam allowance overlap from the diagonal once stitched. Stitch in place with a reduced stitch length (because you're sewing on paper).
8. Press half-square triangle to the corner of your square (see image above on right). Trim the additional seam allowance off.

Applique Panel Instructions

9. Repeat steps 5-8 on the 2nd half-square triangle, mirroring it (see bottom left image). Once that seam is complete and pressed, it should resemble the bottom right image.



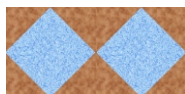
10. Repeat steps 5-8 for the 3rd and 4th half-square triangles, each time mirroring, checking seam allowance, pressing open, and trimming excess.



11. Trim large square-in-a-square block to 10 1/2" square.
12. Repeat steps 5-11 (3) more times to make a total of (4) large square-in-a-square blocks.

Small Square-in-a-Square Instructions

- From fabric **23528-WX**, cut: (8) 6" squares
- From fabric **27935-AC Acorn**, cut: (16) 3 1/2" squares. Cut each of these on the diagonal into half-square triangles.
- Cut the Small Square-in-a-Square templates apart so that you have (1) block you're working with at a time.
- Follow steps 5-10 of the large square-in-a-square instructions (sans measurements), but use the small square-in-a-square template.
- Trim small square-in-a-square blocks to 5 1/2" square.
- Repeat steps 5-11 (7) more times to make a total of (8) small square-in-a-square blocks.
- Stitch blocks together in pairs. You'll have (4) units as pictured below that measure 10 1/2" x 5 1/2."



- For vertical applique panels, from fabric **23528-WX**, cut: (2) 10 1/2" x 23 1/2" pieces
- For horizontal applique panels, from fabric **23528-WX**, cut: (4) 12 1/2" x 5 1/2" pieces
- Assemble your horizontal applique panels by sewing together your flying geese units with the 12 1/2" x 5 1/2" pieces you just cut (see image below).

Make 2 

Make 2 

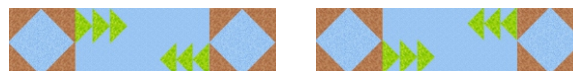
4. Stitch rows together to form (1) of each of the units shown below.



5. Follow basic applique instructions to prepare and finish applique dinosaurs. Center applique dinosaurs on applique panels (vertical and horizontal) according to color image on cover. Ensure that enough room is left for seam allowance (don't place too close to the edge of the block).

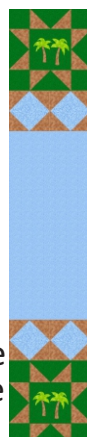
Final Assembly Instructions

1. Attach (1) large square-in-a-square block to each side of your (2) horizontal applique panels (as shown below).



They should each measure 40 1/2" x 10 1/2."

- Attach (1) small square-in-a-square block set to the top and (1) to the bottom of your vertical applique panels. Then attach (1) star block to the top and (1) to the bottom of that unit (pictured to the left). You'll have (2) of these units, each measuring 10 1/2" x 53 1/2."
- Attach units from step 1 to the top and bottom of your squared center panel.
- Attach units from step 2 to each side of your center panel.
- Quilt + bind with a 2 1/2" strip as desired.





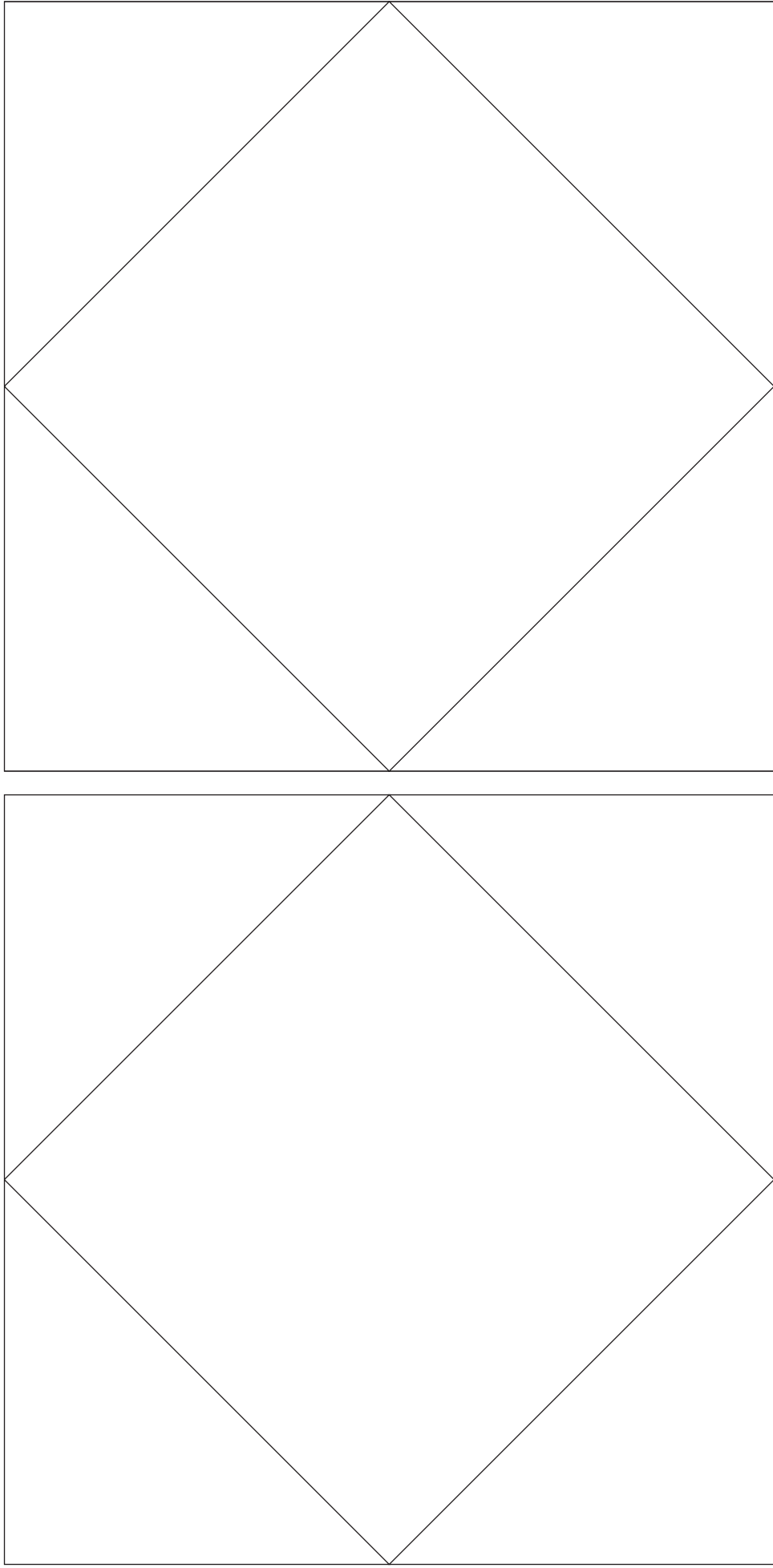
Part 1 - Large Square-in-a-Square Paper Piecing Pattern

Print 4; Tape 1 of each to the vertical red alignment line on
Part 2 of the Large Square-in-a-Square Pattern



Part 2 - Large Square-in-a-Square Paper Piecing Pattern

Print 4; Tape 1 of each on top of the Part 1 Large Square-in-a-Square Pattern



Small Square-in-a-Square Paper Piecing Pattern

Basic Applique Instructions

If you purchased the laser-cut kit by QT Fabrics, then skip all your tracing and cutting steps, and jump directly to step 5 of these basic applique instructions!

1. Ensure your background is larger than needed, is ironed, and ready for applique. (We recommend not trimming the background to size until you have completed all applique.)
2. Trace each template on fusible paper (We recommend using FlexiFuse). Use the templates to trace each piece on to the paper side of the fusible (not the glue side!). All the applique templates are reversed for applique.
3. Iron each fusible traced template to the wrong side of the fabric using your cotton setting with NO steam. Ideal temp is 270 degrees Fahrenheit. Don't remove the fusible paper yet!
4. Using Microtip scissors (our recommendation), cut around the traced lines. Peel off the fusible paper backing by starting from a large, curved edge and peeling toward fine points.
5. Square and center background fabric. Place pieces in order, referring to the color image of the quilt. Iron each piece down with no steam.
6. Applique down using your favorite applique stitch.
 - a. We like to use a Microtex Sharp 60/8 needle with matching Aurifil thread.
 - b. Our favorite stitches:
 - A straight stitch about a 1/16" from the raw edge (works really well on small detailed pieces)
 - A button hole stitch (our favorite)
 - A small zig-zag (works great when using monofilament thread)

JURASSIC JOURNEY - 61" X 54"

Fabric Required:

- **Center Dinosaur Panel:** 1 yard 29767-X
- **Piecing:** ¼ yard 27935-H Lime
1 ½ yards 23528-WX
½ yard 23528-G
⅝ yard 27935-AC Acorn
- **Binding:** ½ yard of 29769-B
- **Backing:** 3-⅓ yards your choice (44-45" WOF)
- **Applique:** 1 FQ 29770-K
1 FQ 29770-G
1 FQ 29770-A
¼ yard 27935-H Lime
¼ yard 27935-AC Acorn

Optional Tools:

- Applique Pressing Sheet
- Light Box
- Marking Tool

LASER CUT QUILTS, LLC

1717 BLACKSMITH CT SUITE B
LOGAN, UT 84321

(208) 960-6051 | WWW.LASERCUTQUILTS.COM